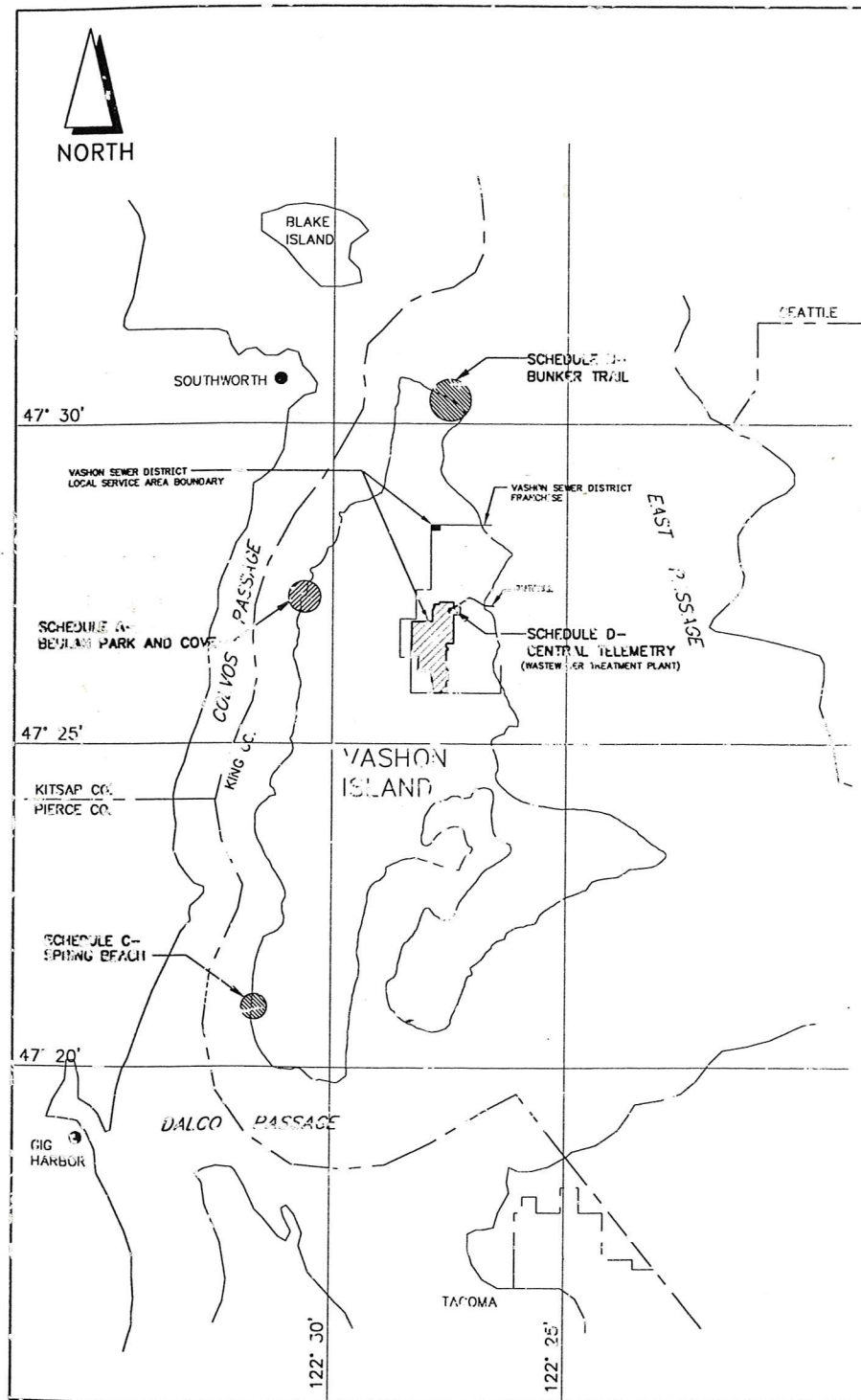


VASHON SEWER DISTRICT

HEALTH HAZARD AREA IMPROVEMENTS



VICINITY MAP

SCHEDULE A - BEULAH PARK AND COVE

SCHEDULE B - BUNKER TRAIL

SCHEDULE C - SPRING BEACH

SCHEDULE D - CENTRAL TELEMETRY

ADDENDUM NOS. 1, 2, AND 3 INCORPORATED

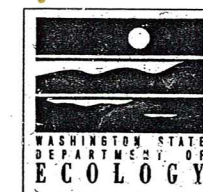
FUNDED IN PART BY THE WASHINGTON STATE
DEPARTMENT OF ECOLOGY'S CENTENNIAL
CLEANWATER FUND. GRANT NO. G-9400306 AND FP97070



10800 N.E. 21st St. 7th Floor
Bellevue, WA 98005
425 455-9499
425 453-9470 (FAX)

720 S. 21st St. Ste. 200
Federal Way, WA 98003
253 850-7502
253 874-0577 (FAX)

1200 Dupont St. Ste. 2-9
Bellingham, WA 98225
360 734-3202
360 734-0816 (FAX)



DRAWING INDEX

SHEET NO.	DRAWING NO.	TITLE
GENERAL:		
---	---	COVER SHEET
G1		DRAWING INDEX
G2		PROJECT MAPS
G3		WASTEWATER TREATMENT DESIGN CRITERIA
G4		SCHEDULE A - BEULAH PARK AND COVE WASTEWATER TREATMENT PROCESS DIAGRAM
G5		SCHEDULE A - BEULAH PARK AND COVE WASTEWATER TREATMENT HYDRAULIC PROFILE
G6		SCHEDULE C - SPRING BEACH WASTEWATER TREATMENT PROCESS DIAGRAM
G7		SCHEDULE C - SPRING BEACH WASTEWATER TREATMENT HYDRAULIC PROFILE
G8		SCHEDULE B - BUNKER TRAIL DETOUR PLAN
G9		SCHEDULE B - BUNKER TRAIL WORK AREA PLAN

TEMPORARY EROSION CONTROL:		
GENERAL		
EC1		EROSION CONTROL NOTES
EC2		EROSION CONTROL DETAILS
SCHEDULE A - BEULAH PARK AND COVE		
EC101		EROSION CONTROL PLAN
EC102		EROSION CONTROL PLAN
EC103		EROSION CONTROL PLAN
EC104		EROSION CONTROL DETAILS
SCHEDULE B - BUNKER TRAIL		
EC201		EROSION CONTROL PLAN
SCHEDULE C - SPRING BEACH		
EC301		EROSION CONTROL PLAN

COLLECTION SYSTEM:		
GENERAL		
CS1		VACUUM MANIFOLD DETAILS
CS2		VACUUM MANIFOLD DETAILS
CS3		VACUUM INTERFACE DETAILS
SCHEDULE A - BEULAH PARK AND COVE		
CS101		SITE PLAN
CS102		VACUUM MANIFOLD "A" PLAN AND PROFILE STATION 4+03 TO STATION 9+00
CS103		VACUUM MANIFOLD "A" PLAN AND PROFILE STATION 9+00 TO STATION 19+76
CS104		VACUUM MANIFOLD "B" PLAN AND PROFILE
CS105		VACUUM MANIFOLD "C", "D", AND "E" PLAN AND PROFILE
CS106		VACUUM MANIFOLD "F" PLAN AND PROFILE
CS107		CREEK CROSSING
SCHEDULE B - BUNKER TRAIL		
CS201		VACUUM MANIFOLD PLAN AND PROFILE STATION 2+00 TO STATION 15+00
CS202		VACUUM MANIFOLD PLAN AND PROFILE STATION 15+00 TO STATION 28+00
CS203		FORCE MAIN PLAN STATION 9+85 TO STATION 33+00
CS204		FORCE MAIN PLAN STATION 33+00 TO STATION 58+00
CS205		FORCE MAIN PLAN STATION 58+00 TO STATION 119+00
CS206		FORCE MAIN PLAN STATION 119+00 TO STATION 176+00
CS207		SW 171ST STREET FORCE MAIN EXTENSION
CS208		FORCE MAIN DETAILS
SCHEDULE C - SPRING BEACH		
CS301		GRAVITY SEWER, STORM DRAIN, AND FORCE MAIN PLAN AND PROFILE
CS302		GRAVITY SEWER DETAILS

SHEET NO.	DRAWING NO.	TITLE
VACUUM AND PUMP STATIONS:		
CIVIL		
SCHEDULE A - BEULAH PARK AND COVE		
VC101		VACUUM STATION BP AND PUMP STATION BP-1 SITE PLAN
SCHEDULE B - BUNKER TRAIL		
VC201		VACUUM STATION BT AND PUMP STATION BT-1 SITE PLAN
STRUCTURAL		
GENERAL		
VS1		STRUCTURAL NOTES
VS2		DESIGN SOIL PRESSURE DIAGRAMS AND ABBREVIATIONS
VS3		STRUCTURAL DETAILS
VS4		STRUCTURAL DETAILS
VS5		STRUCTURAL DETAILS
VS6		STRUCTURAL DETAILS
SCHEDULE A - BEULAH PARK AND COVE		
VS101		VACUUM STATION BP PLANS
VS102		VACUUM STATION BP SECTIONS
VS103		VACUUM STATION BP SECTIONS AND DETAILS
VS104		VACUUM STATION BP-1 SECTIONS AND DETAILS
VS105		PUMP STATION BP-1 PLAN, SECTIONS AND DETAILS
SCHEDULE B - BUNKER TRAIL		
VS201		VACUUM STATION BT AND PUMP STATION BT-1 EXCAVATION AND SHORING PLAN
VS202		VACUUM STATION BT AND PUMP STATION BT-1 EXCAVATION AND SHORING ELEVATIONS AND PILE SCHEDULE
VS203		VACUUM STATION BT AND PUMP STATION BT-1 EXCAVATION AND SHORING SECTIONS AND DETAILS
VS204		VACUUM STATION BT AND PUMP STATION BT-1 EXCAVATION AND SHORING SECTIONS AND DETAILS
VS205		VACUUM STATION BT AND PUMP STATION BT-1 PLANS
VS206		VACUUM STATION BT AND PUMP STATION BT-1 SECTIONS
VS207		VACUUM STATION BT AND PUMP STATION BT-1 SECTIONS
VS208		VACUUM STATION BT AND PUMP STATION BT-1 SECTIONS
VS209		VACUUM STATION BT AND PUMP STATION BT-1 SECTIONS
VS210		VACUUM STATION BT AND PUMP STATION BT-1 RETAINING WALL PLAN
VS211		VACUUM STATION BT AND PUMP STATION BT-1 RETAINING WALL ELEVATION AND PANELS
VS212		VACUUM STATION BT AND PUMP STATION BT-1 RETAINING WALL PANELS
VS213		VACUUM STATION BT AND PUMP STATION BT-1 RETAINING WALL PANELS AND DETAILS

MECHANICAL		
GENERAL		
VM1		VACUUM STATIONS BP AND BT PLAN AND SECTIONS
VM2		VACUUM STATIONS BP AND BT DETAILS
VM3		PUMP STATIONS BP-1, BT-2, BT-3, BT-4, AND SB-1 PLAN AND SECTIONS
SCHEDULE A - BEULAH PARK AND COVE		
VM101		VACUUM STATION BP HEATING AND VENTILATION
SCHEDULE B - BUNKER TRAIL		
VM201		PUMP STATION BT-1 PLAN AND SECTIONS
VM202		PUMP STATION BT-1 SECTIONS AND DETAILS
VM203		VACUUM STATION BT HEATING AND VENTILATION

DATUM

SPRING BEACH

SPRING BEACH VERTICAL DATUM: NATIONAL GEODETIC VERTICAL DATUM 1929
MEAN SEA LEVEL=0.00 MLLW=-6.3. BENCH MARK AT STATION "BOULDER"=
ELEVATION +12.00. ESTIMATED 100 YEAR WATER LEVEL=ELEVATION 9.2.

BEULAH PARK

BEULAH PARK AND COVE VERTICAL DATUM: NATIONAL GEODETIC VERTICAL DATUM 1929. MEAN SEA LEVEL=0.00, MLLW=-6.3. BENCH MARK AT STATION "IDE" IS APPROXIMATE ELEVATION 10.00. ELEVATIONS SHOWN ON THE PLANS REFERENCE THIS DATUM.

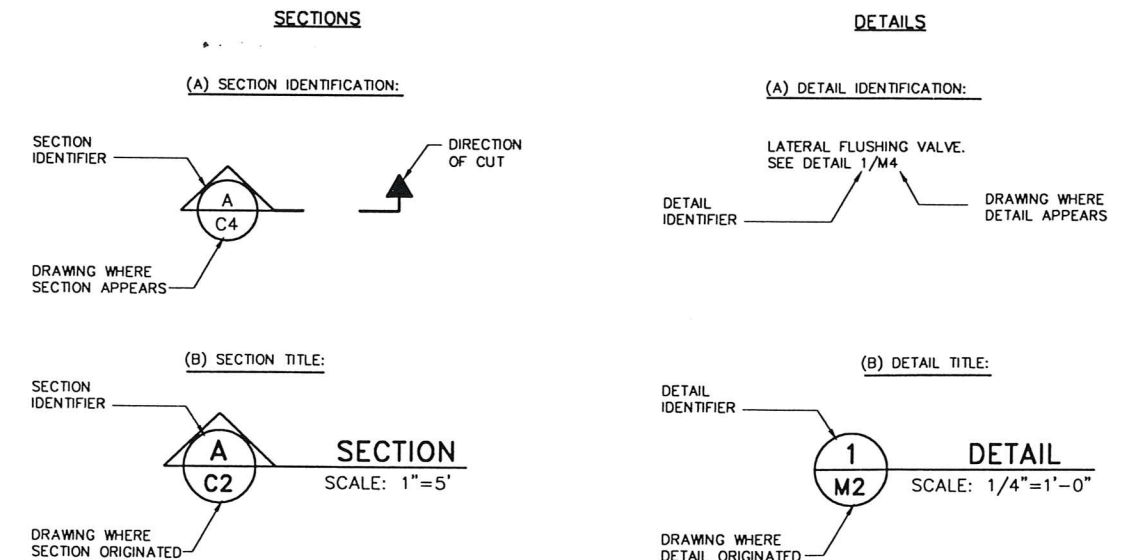
BUNKER TRAIL

BUNKER TRAIL VERTICAL DATUM: MLLW=0.00, MEAN SEA LEVEL=+6.3. TIDAL BENCHMARK #944 6025 F 1981=ELEVATION 14.75 ABOVE MLLW.

SHEET NO.	DRAWING NO.	TITLE
WASTEWATER TREATMENT FACILITIES:		
CIVIL		
SCHEDULE A - BEULAH PARK AND COVE		
WC101		GENERAL SITE PLAN
WC102		UPPER SITE PLAN
WC103		STORM DRAIN PROFILE
WC104		SITE SECTIONS
WC105		SITE DETAILS
WC106		BEULAH PARK SUBSURFACE DRAIN INTERCEPTOR SYSTEM
SCHEDULE C - SPRING BEACH		
WC301		SITE PLAN
WC302		SITE SECTIONS
WC303		SITE SECTIONS
STRUCTURAL		
GENERAL		
WS1		STRUCTURAL NOTES
WS2		STRUCTURAL NOTES, ABBREVIATIONS, AND DESIGN SOIL PRESSURE DIAGRAMS
SCHEDULE A - BEULAH PARK AND COVE		
WS101		FILTER PLAN
WS102		FILTER SECTIONS AND DETAILS
WS103		GABION WALL PLAN AND DETAILS
SCHEDULE C - SPRING BEACH		
WS301		FILTER STRUCTURE PLAN AND ELEVATIONS
WS302		FILTER STRUCTURE SECTIONS AND DETAILS
WS303		FILTER STRUCTURE COVER PANELS
MECHANICAL		
SCHEDULE A - BEULAH PARK AND COVE		
WM101		SITE PLAN
WM102		YARD PIPING PLAN
WM103		FILTER PLAN AND DETAILS
WM104		FILTER SECTIONS AND DETAILS
WM105		EQUIPMENT BUILDING
WM106		SECTIONS
WM107		DETAILS
WM108		DETAILS
SCHEDULE C - SPRING BEACH		
WM301		YARD PIPING PLAN
WM302		FILTER PLAN AND SECTIONS
WM303		SECTIONS
WM304		SECTIONS

SHEET NO.	DRAWING NO.	TITLE
EFFLUENT TRANSMISSION/DISPOSAL:		
SCHEDULE A - BEULAH PARK AND COVE		
ED101		DRIP IRRIGATION FIELD SITE PLAN
ED102		DRIP IRRIGATION FIELD DETAILS
SCHEDULE C - SPRING BEACH		
ED301		DRIP IRRIGATION FIELD SITE PLAN
ED302		DRIP IRRIGATION FIELD DETAILS
ELECTRICAL:		
GENERAL		
E1		ELECTRICAL SYMBOLS AND LEGENDS
SCHEDULE A - BEULAH PARK AND COVE		
E101		VACUUM STATION BP AND PUMP STATION BP-1 ELECTRICAL SITE PLAN AND PANEL DETAILS
E102		POWER AND CONTROL PLAN
E103		VACUUM STATION PLAN AND EQUIPMENT BUILDING PLAN
E104		ONE LINE DIAGRAM
SCHEDULE B - BUNKER TRAIL		
E201		VACUUM STATION BT AND PUMP STATION BT-1 PUMP STATION PLANS BT-2, BT-3 AND BT-4
E202		VACUUM STATION BT AND STATIONS BT-1, BT-2, BT-3 AND BT-4 ONE LINE DIAGRAM
E203		
SCHEDULE C - SPRING BEACH		
E301		PUMP STATION SB-1 PLANS AND DETAILS
E302		SITE PLAN
E303		ONE-LINE DIAGRAM
SCHEDULE D - CENTRAL TELEMETRY		
CT1		TELEMETRY SYSTEM DIAGRAM
CT2		CENTRAL TELEMETRY SITE PLAN

DRAWING CROSS-REFERENCE SYSTEM



Date	No.	Description	By
		REVISION	

Project No: 28707.05.01	
Designed: JMH	Checked: JCW
Drawn: CAD TEAM	Scale: NONE
Date: MAY 1999	Appr:

EARTH TECH

10800 N.E. 8th St. 7th Floor
Bellevue, WA 98004
425 455-9494
425 453-9470 (FAX)

720 S. 333 St. Ste. 200
Federal Way, WA 98003
253 838-6202
253 874-0577 (FAX)

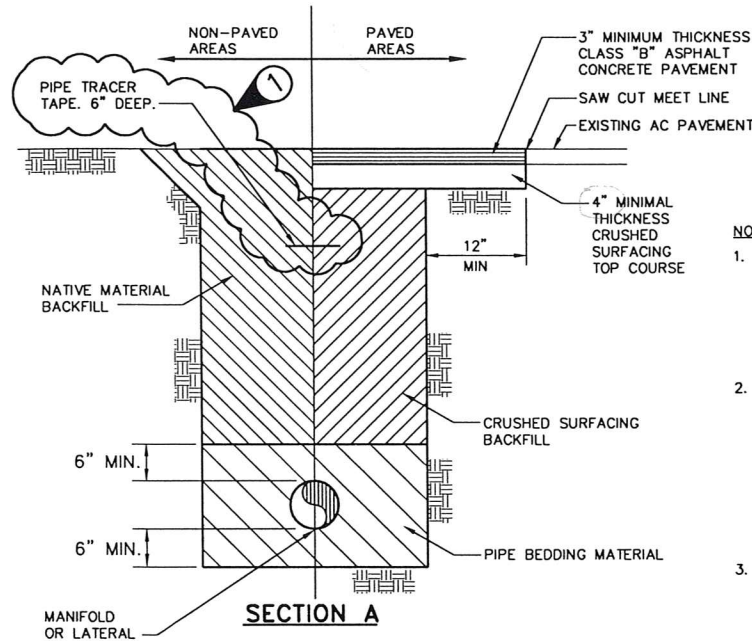
1200 Dupont St. Ste. 2-B
Bellingham, WA 98225
360 734-3202
360 734-0818 (FAX)

**VASHON SEWER DISTRICT
HEALTH HAZARD AREA IMPROVEMENTS**

GENERAL

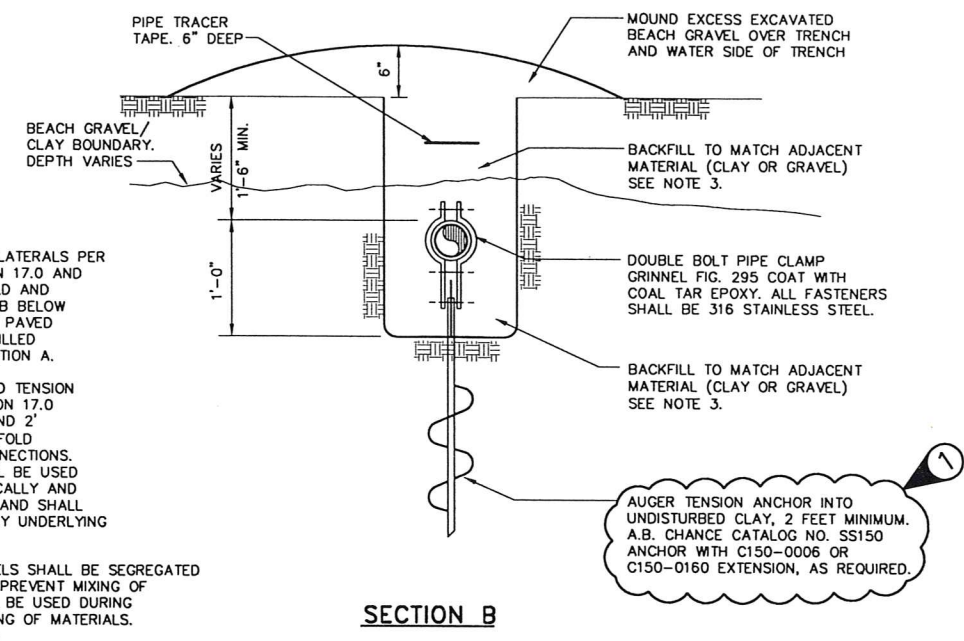
**GENERAL
DRAWING INDEX**

FILE INFORMATION: 4/26/99 VI-g0001.dwg
ET-348600.PC2
DRAWING NO. G1
SHEET NO. OF

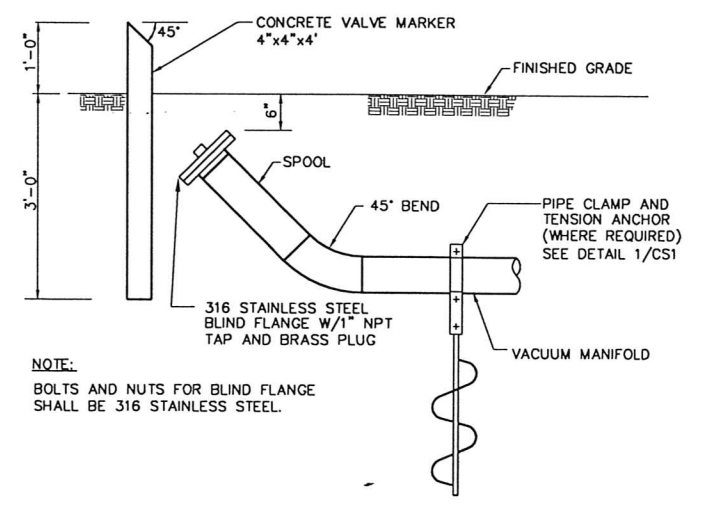


1 VACUUM MANIFOLD AND LATERAL TRENCH SECTIONS
 CS101 SCALE: NONE

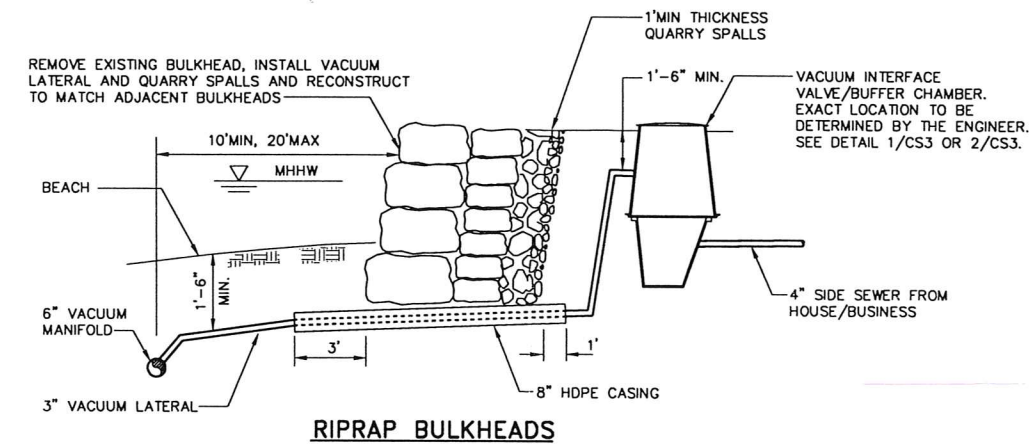
- NOTES:**
1. INSTALL MANIFOLD AND LATERALS PER SECTION A AT ELEVATION 17.0 AND ABOVE. INSTALL MANIFOLD AND LATERALS PER SECTION B BELOW ELEVATION 17.0, EXCEPT PAVED AREAS SHALL BE BACKFILLED AND RESTORED PER SECTION A.
 2. INSTALL PIPE CLAMP AND TENSION ANCHOR BELOW ELEVATION 17.0 AT 25' MAX. SPACING AND 2' EACH SIDE OF ALL MANIFOLD LIFTS AND LATERAL CONNECTIONS. TENSION ANCHORS SHALL BE USED TO POSITION PIPE VERTICALLY AND ANCHOR PIPE IN PLACE AND SHALL EXTEND INTO DENSE CLAY UNDERLYING THE BEACH GRAVELS.
 3. BEACH CLAY AND GRAVELS SHALL BE SEGREGATED DURING EXCAVATION TO PREVENT MIXING OF MATERIALS. CARE SHALL BE USED DURING BACKFILL TO AVOID MIXING OF MATERIALS.



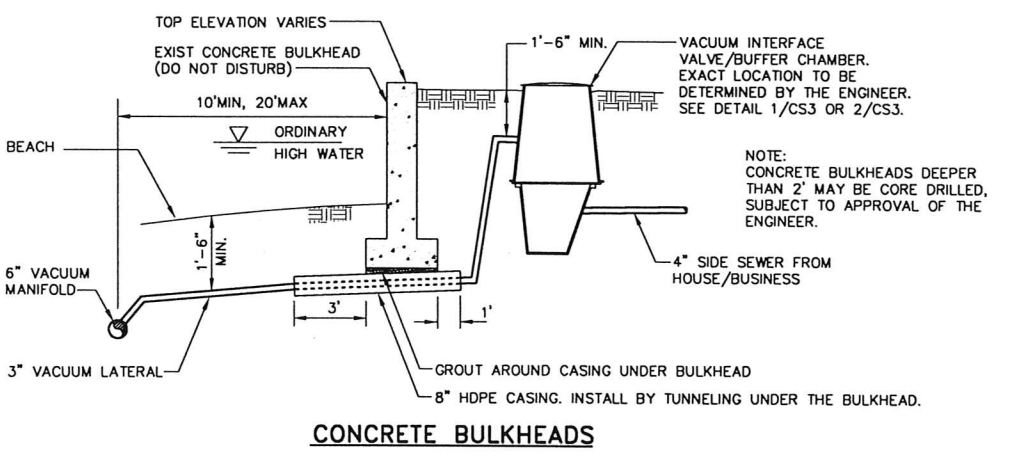
SECTION B



2 CLEANOUT DETAIL
 CS103 SCALE: 3/4"=1'-0"



RIPRAP BULKHEADS

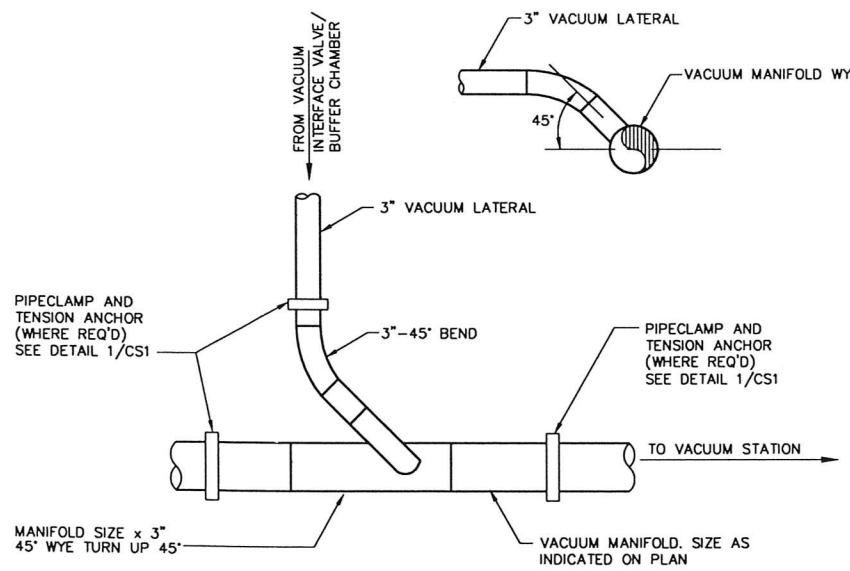
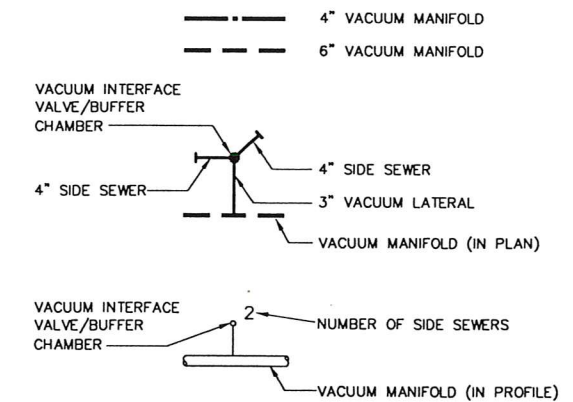


CONCRETE BULKHEADS

VACUUM COLLECTION SYSTEM NOTES

1. THE OUTLINE OF THE EXISTING HOUSES, DECKS, AND WALKWAYS IS DERIVED FROM AERIAL PHOTOGRAMMETRY AND IS APPROXIMATE ONLY.
2. THE APPROXIMATE HORIZONTAL ALIGNMENT OF THE VACUUM MANIFOLD WILL BE STAKED BY THE ENGINEER PRIOR TO CONSTRUCTION.
3. THE HORIZONTAL ALIGNMENT OF THE VACUUM LATERAL AND LOCATION OF THE VACUUM INTERFACE VALVE/BUFFER CHAMBER IS APPROXIMATE ONLY. SEE TYPICAL VACUUM INTERFACE ARRANGEMENT ON DRAWING CS3.
4. INSTALL ALL MANIFOLD LIFTS PER DETAIL 1/CS2.
5. THE VACUUM MANIFOLD SHALL BE INSTALLED IN ACCORDANCE WITH THE PROFILE SHOWN ON THE APPLICABLE DRAWING. MINIMUM SLOPE SHALL BE 0.20 PERCENT. DEVIATION FROM UNIFORM SLOPE BETWEEN MANIFOLD LIFTS SHALL NOT EXCEED 0.10 FEET.
6. SEE DETAIL 1/CS1 FOR TYPICAL VACUUM MANIFOLD AND LATERAL TRENCH SECTION AND ANCHORS.
7. ALL VACUUM INTERFACE VALVES SHALL BE IN ACCORDANCE WITH DETAIL 2/CS3 EXCEPT AS NOTED.
8. INSTALL VACUUM LATERALS THROUGH BULKHEADS IN ACCORDANCE WITH DETAIL 4/CS1.

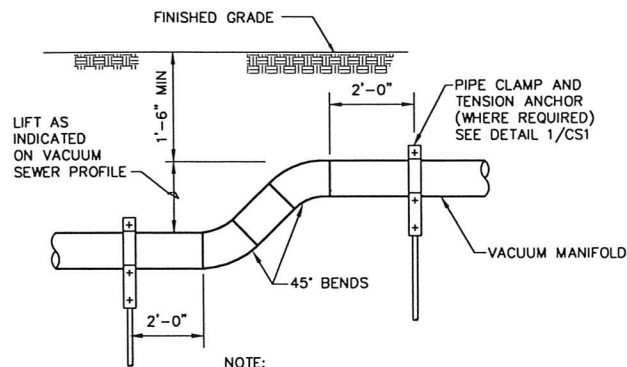
VACUUM COLLECTION SYSTEM LEGEND



3 LATERAL TO MANIFOLD CONNECTION
 CS102 SCALE: 1"=1'-0"

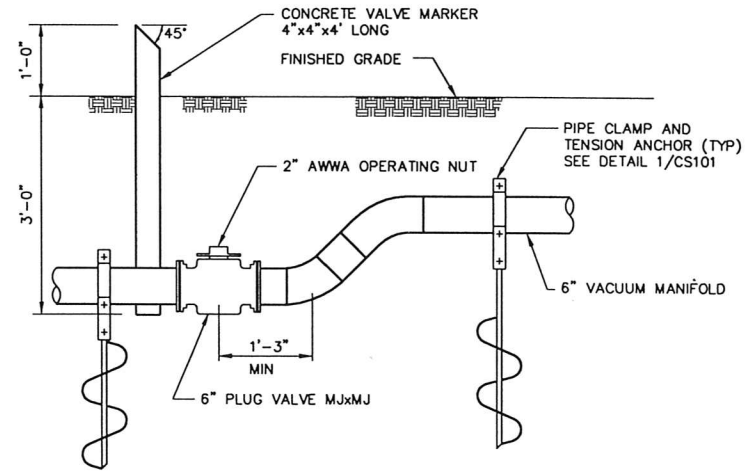
4 BULKHEAD TRANSITION
 CS102 SCALE: NONE

								VASHON SEWER DISTRICT HEALTH HAZARD AREA IMPROVEMENTS GENERAL		COLLECTION SYSTEM VACUUM MANIFOLD DETAILS		FILE INFORMATION: 9/20/99 VI-ca001.dwg ET34.PC2 DRAWING NO. CS1 SHEET NO. OF	
Project No: 28707.05.01 Designed: RD Checked: JCW Drawn: CAD ETAM Scale: AS NOTED Date: MAY 1999 Apprd:		10800 N.E. 8th St. 7th Floor Bellevue, WA 98004 425 455-9494 425 453-9470 (FAX)		720 S. 333 St. Ste. 200 Federal Way, WA 98003 253 838-8202 253 874-0577 (FAX)		1200 Dupont St. Ste. 2-B Bellingham, WA 98225 360 734-3202 360 734-0816 (FAX)							
6/9/99	1	ADDENDUM NO. 2	EAD										
Date	No.	Description	By										
REVISION													

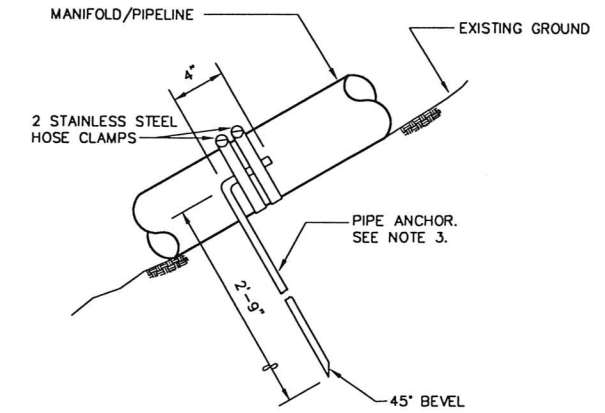


1 MANIFOLD LIFT DETAIL
 CS102 SCALE: 3/4"=1'-0"

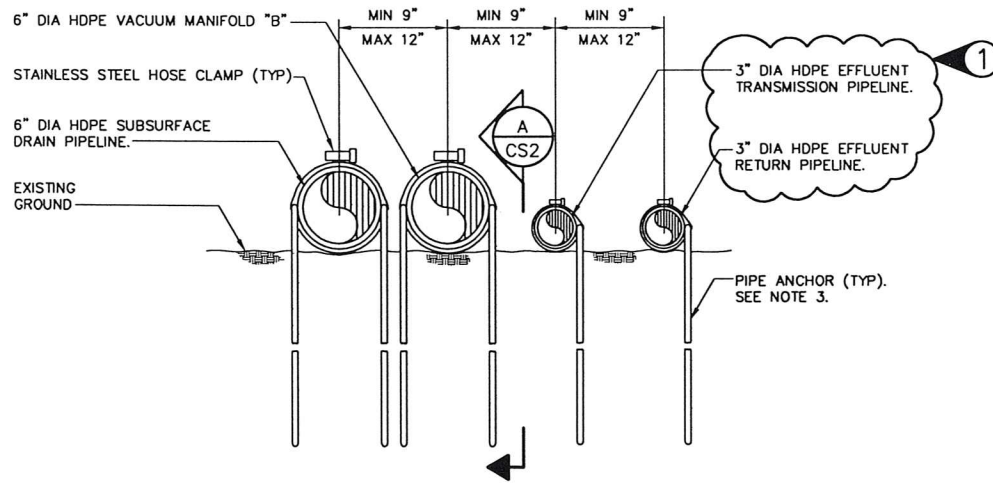
NOTE:
 LOCATION AND HEIGHT OF MANIFOLD LIFTS
 PER PLAN AND PROFILE.



2 ZONE VALVE
 CS202 SCALE: 3/4"=1'-0"



A SECTION
 CS2 SCALE: 1 1/2"=1'-0"



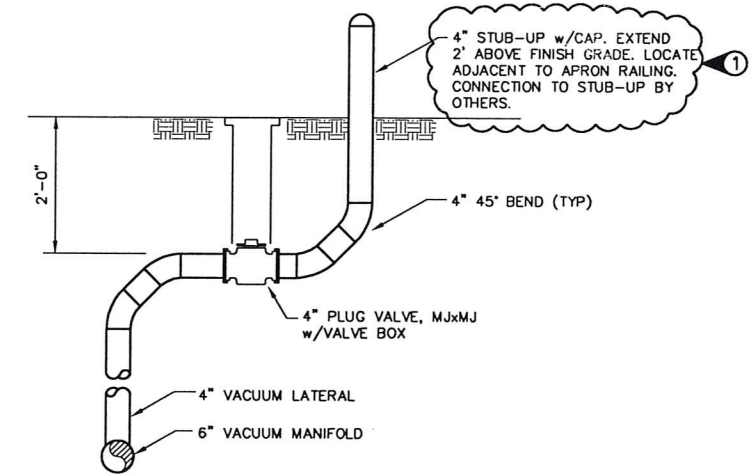
3 STEEP SLOPE PIPE INSTALLATION
 CS104 SCALE: 1 1/2"=1'-0"

NOTES:

1. PIPELINES SHALL BE INSTALLED ON THE GROUND SURFACE ON SLOPES 20% OR GREATER. THE EXACT TRANSITION POINT FROM BURIED TO EXPOSED SHALL BE DETERMINED IN THE FIELD BY THE ENGINEER.
2. VEGETATION SHALL BE DISTURBED TO THE MINIMUM EXTENT REQUIRED TO FACILITATE INSTALLATION OF THE PIPELINES. DAMAGED VEGETATION SHALL BE REPLACED.
3. PIPE ANCHORS SHALL BE 5/8" DIAMETER, EPOXY-COATED, DEFORMED, GRADE 60 REINFORCING BARS. THE ANCHORS SHALL BE SHOP FABRICATED. DAMAGED EPOXY SHALL BE REPAIRED IN ACCORDANCE WITH THE EPOXY MANUFACTURER'S RECOMMENDATION. DRIVE REBAR ANCHORS INTO UNDISTURBED GROUND. MINIMUM PENETRATION SHALL BE 2'-6". ANCHORS SHALL BE INSTALLED AT 20' MAXIMUM SPACING. INSTALL ONE ANCHOR ON PIPES 3" DIAMETER OR SMALLER. INSTALL TWO ANCHORS ON PIPES LARGER THAN 3" DIAMETER.

NOTE:

LOCATION OF CONNECTION AND STUB-OUT
 TO BE DETERMINED BY ENGINEER



4 FERRY TERMINAL CONNECTION
 CS201 SCALE: NONE

Date	No.	Description	By
6/9/99	1	ADDENDUM NO. 2	EAD

Project No: 28707.05.01	Designed: RD	Checked: JCW
Drawn: CAD TEAM	Scale: AS NOTED	Date: MAY 1999
Appr:		

Professional Engineer seals for John C. Wilcox and Dirk Van Wagoner.

EARTH TECH

10800 N.E. 8th St. 7th Floor
 Bellevue, WA 98004
 425 455-9494
 425 453-9470 (FAX)

720 S. 333 St. Ste. 200
 Federal Way, WA 98003
 253 836-8202
 253 874-0577 (FAX)

1200 Dupont St. Ste. 2-8
 Bellingham, WA 98225
 360 734-3202
 360 734-0818 (FAX)

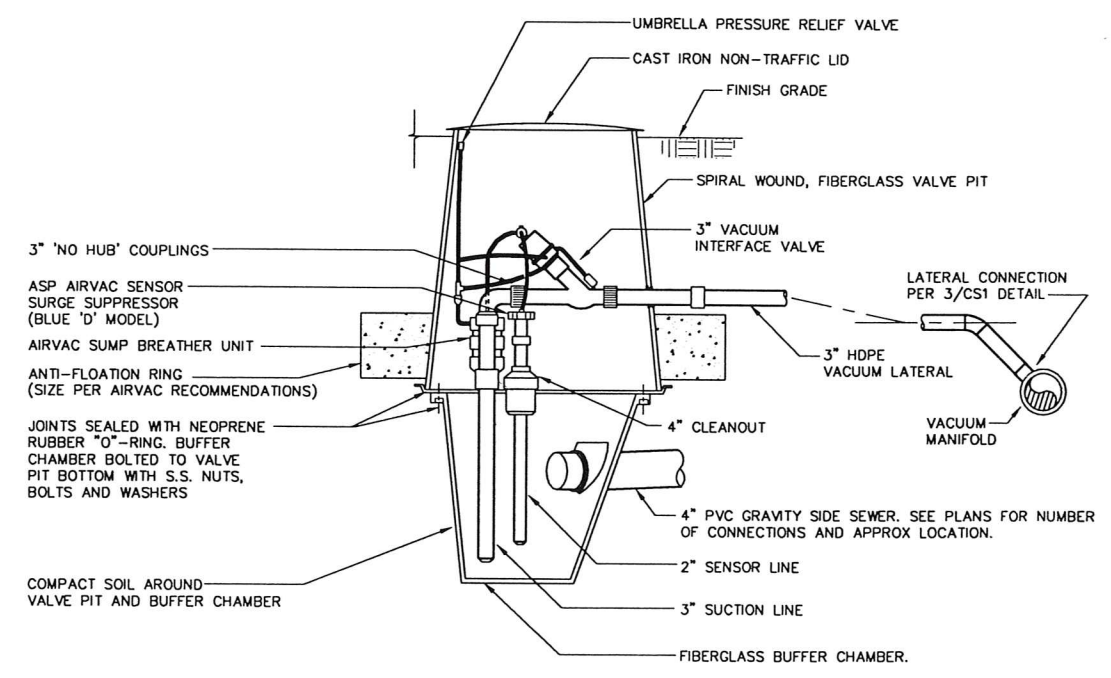
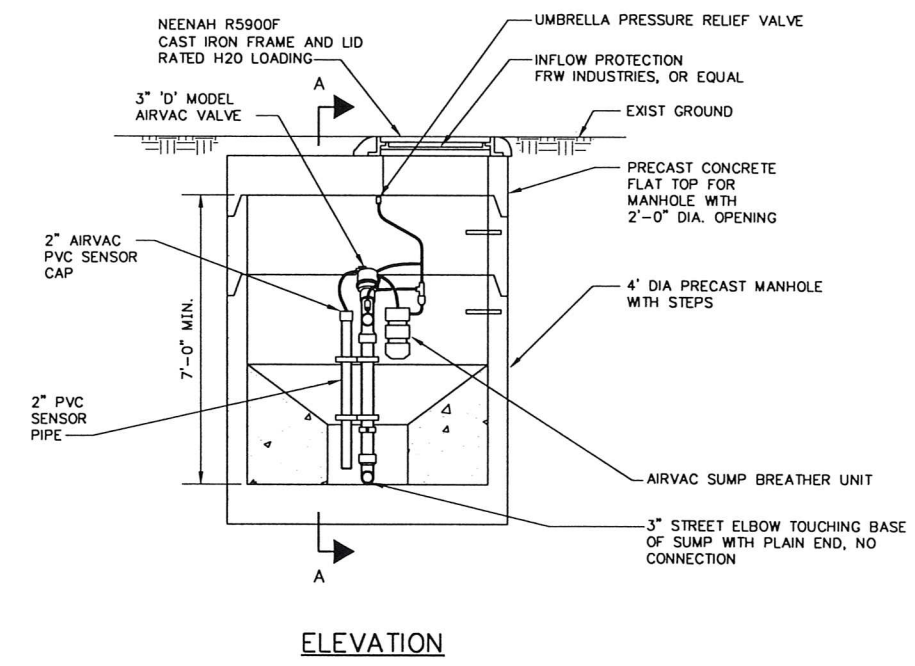
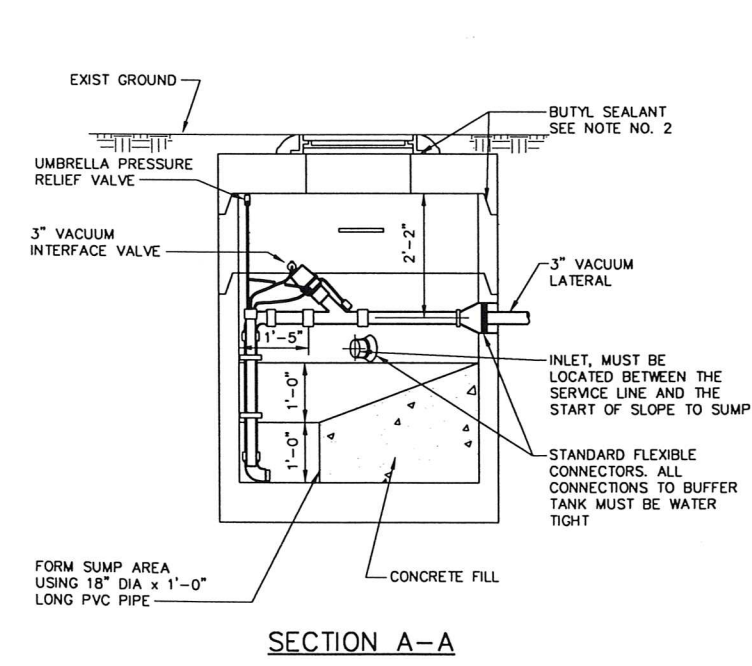
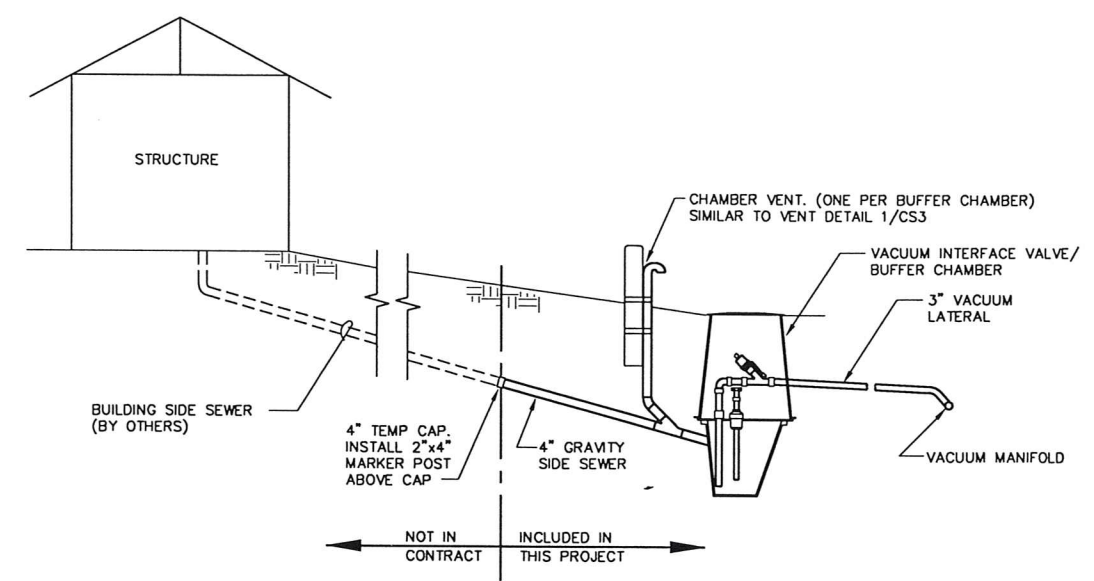
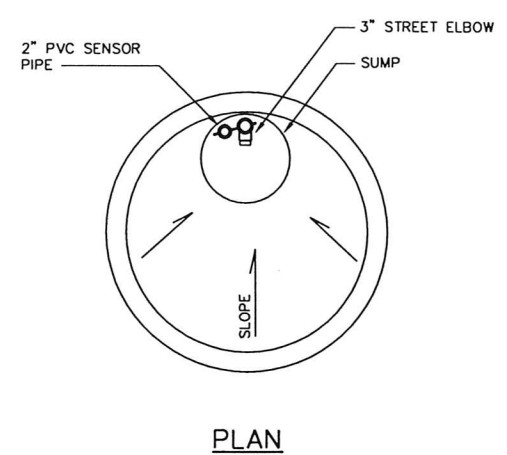
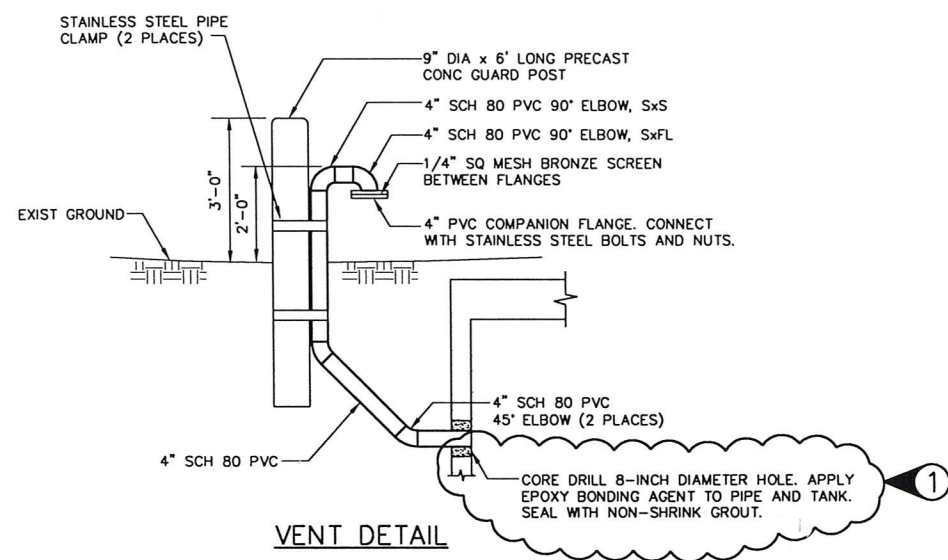
VASHON SEWER DISTRICT
HEALTH HAZARD AREA IMPROVEMENTS

GENERAL

COLLECTION SYSTEM
VACUUM MANIFOLD DETAILS

FILE INFORMATION: 9/21/99 V-cs002.dwg
DRWING NO. CS2
SHEET NO. OF

NOTE:
LOCATION OF VENT TO BE DETERMINED IN THE
FIELD BY THE ENGINEER



1 BUFFER TANK
CS103 NTS

2 VACUUM INTERFACE VALVE/BUFFER CHAMBER
CS1 NTS

Date	No.	Description	By
6/9/99	1	ADDENDUM NO. 2	EAD
		REVISION	

ONE INCH
0 1" AT FULL SIZE
IF NOT ONE INCH SCALE ACCORDINGLY

Project No: 28707.05.01

Designed: RD Checked: JCW

Drawn: CAD TEAM Scale: AS NOTED

Date: MAY 1999 Appr:

Professional Engineer Seal: JOYIN S. WANG, LICENSED PROFESSIONAL ENGINEER, EXPIRES 1/18/01

Professional Engineer Seal: DIK VAN WOLFF, LICENSED PROFESSIONAL ENGINEER, EXPIRES 2/4/01

EARTH TECH

10800 N.E. 8th St. 7th Floor
Bellevue, WA 98004
425 455-9494
425 453-9470 (FAX)

720 S. 333 St. Ste. 200
Federal Way, WA 98003
253 838-8202
253 874-0577 (FAX)

1200 Dupont St. Ste. 2-B
Bellevue, WA 98225
360 734-3202
360 734-0816 (FAX)

VASHON SEWER DISTRICT
HEALTH HAZARD AREA IMPROVEMENTS

GENERAL

COLLECTION SYSTEM

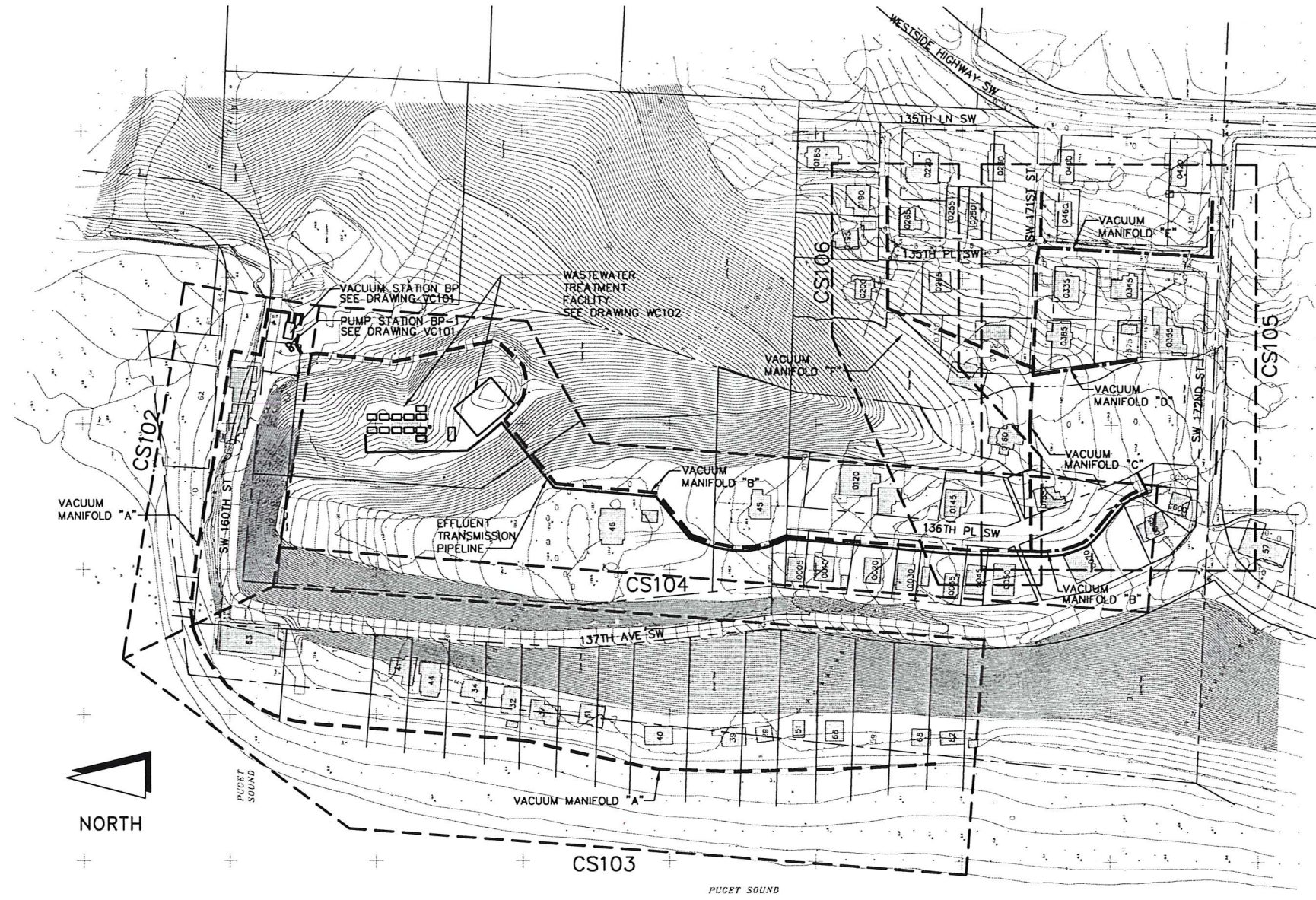
VACUUM INTERFACE DETAILS

FILE INFORMATION:
9/21/99
V-cs003.dwg

ETL3APCS

DRAWING NO.
CS3

SHEET NO.
OF



COLLECTION SYSTEM LAYOUT
SCALE: 1"=100'

Date	No.	Description	By

Project No: 28707.05.01	
Designed: JMH	Checked: JCW
Drawn: CAD TEAM	Scale: AS NOTED
Date: MAY 1999	Apprd:

EARTH TECH

10800 N.E. 8th St. 7th Floor
Bellevue, WA 98004
425 455-9494
425 453-9470 (FAX)

720 S. 333 St. Ste. 200
Federal Way, WA 98003
253 838-5002
253 874-0577 (FAX)

1200 Dupont St. Ste. 2-B
Bellingham, WA 98225
360 734-3202
360 734-0816 (FAX)

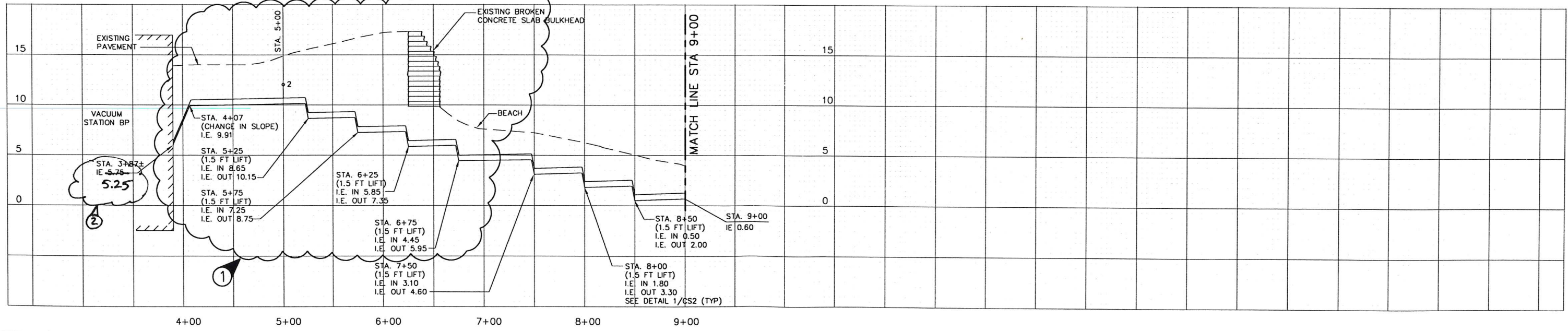
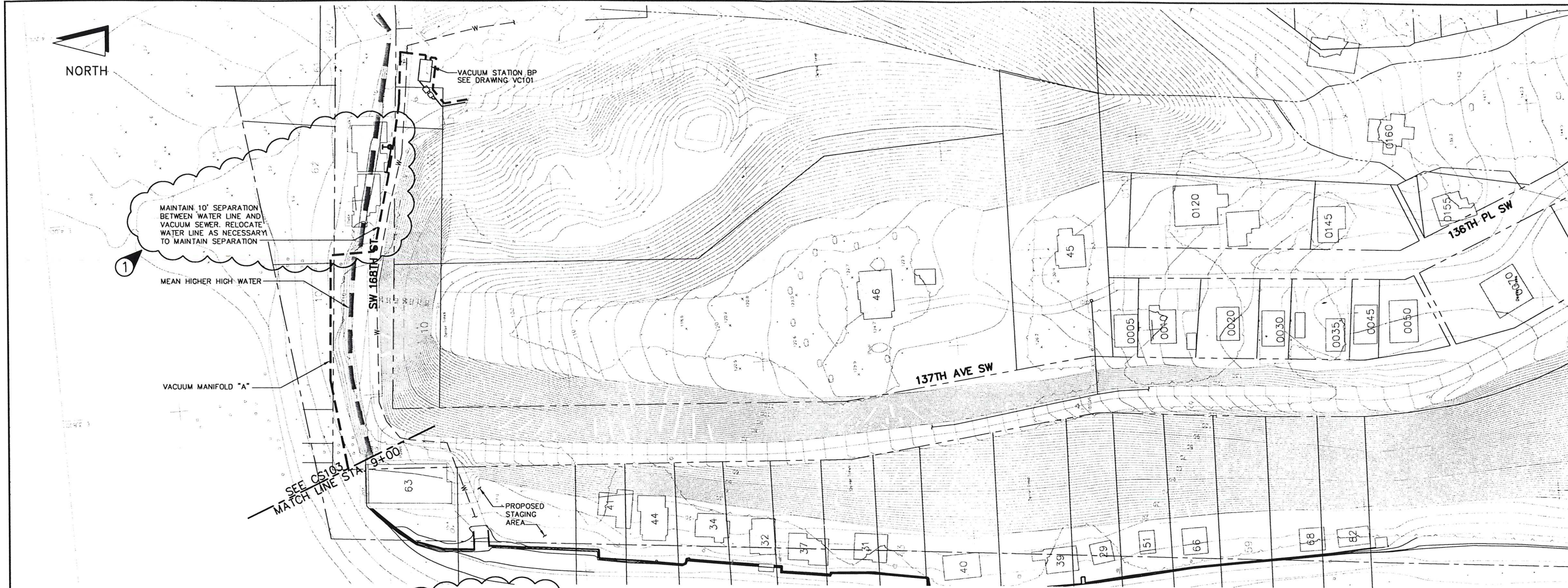
**VASHON SEWER DISTRICT
HEALTH HAZARD AREA IMPROVEMENTS**

**SCHEDULE A
BEULAH PARK AND COVE**

COLLECTION SYSTEM

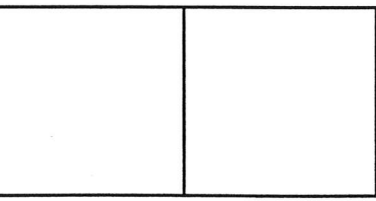
SITE PLAN

FILE INFORMATION: 4/21/99 V-cs101.dwg Bobbins-1.dwg
ET34.PC2
DRAWING NO. CS101
SHEET NO. OF



REVISION	No.	Description	By
3/1/00	2	Submital Review - Sub 001/001A	EAD
2/8/00	1	ENGINEER MODIFICATION 003	EAD

Project No: 28707.05.01
 Designed: JMH
 Checked: JCW
 Drawn: CAD TEAM
 Scale: HOR: 1"=50'
 VERT: 1"=5'
 Date: MAY 1999
 Apprd:



EARTH TECH

10800 N.E. 8th St. 7th Floor
 Bellevue, WA 98004
 425 455-9494
 425 453-9470 (FAX)

720 S. 333 St. Ste. 200
 Federal Way, WA 98003
 253 838-6202
 253 874-0577 (FAX)

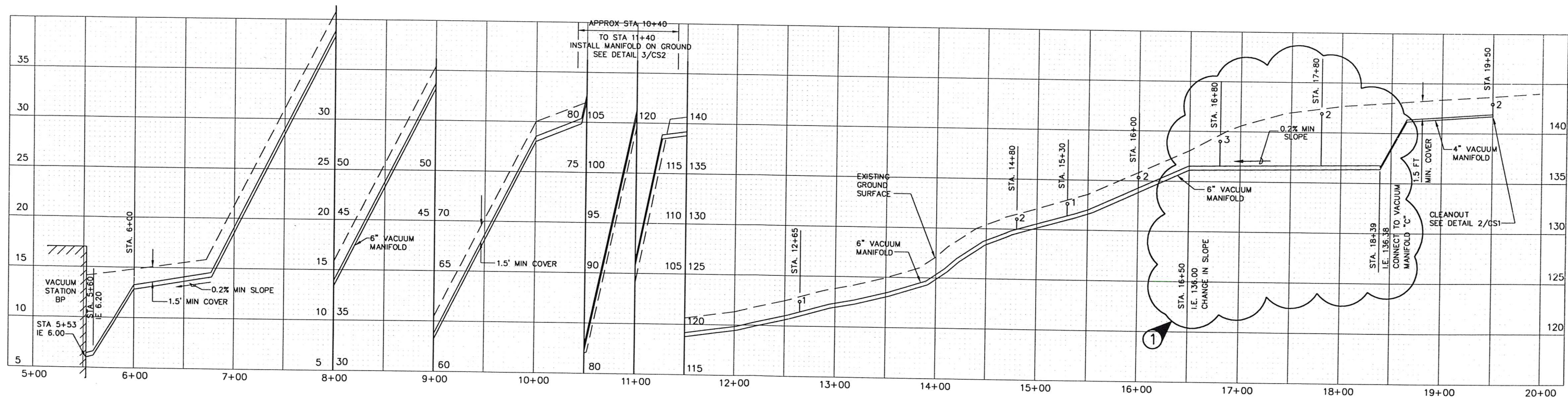
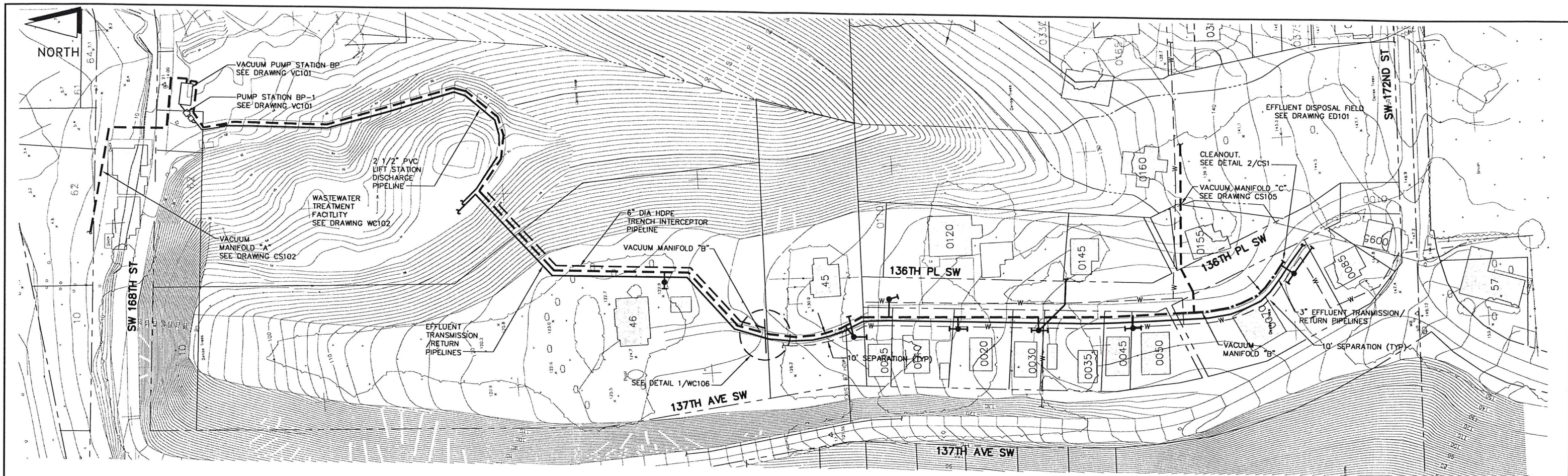
1200 Dupont St. Ste. 2-8
 Bellingham, WA 98225
 360 734-3202
 360 734-0816 (FAX)

VASHON SEWER DISTRICT
HEALTH HAZARD AREA IMPROVEMENTS

SCHEDULE A
BEULAH PARK AND COVE

COLLECTION SYSTEM
VACUUM MANIFOLD "A"
PLAN AND PROFILE
STA 4+03 TO STA 9+00

FILE INFORMATION:
 2/08/00
 W-cs102.dwg
 Bpbase-1.dwg
 ER34.PC2
 DRAWING NO.
CS102
 SHEET NO.
 OF



Date	No.	Description	EAD	By
3/06/00	1	ENGINEERING MODIFICATION 004		
REVISION				

ONE INCH = 1" AT FULL SIZE IF NOT ONE INCH SCALE ACCORDINGLY	
Project No: 28707.05.01	Designed: RD
Checked: JCW	Drawn: CAD TEAM
Scale: HORIZ: 1"=50'	Scale: VERT: 1"=5'
Date: MAY 1999	Apprd:



10800 N.E. 8th St. 7th Floor
 Bellevue, WA 98004
 425 455-9494
 425 453-9470 (FAX)

720 S. 333 St. Ste. 200
 Federal Way, WA 98003
 253 838-6202
 253 874-0577 (FAX)

1200 Dupont St. Ste. 2-B
 Bellingham, WA 98225
 360 734-3202
 360 734-0816 (FAX)

**VASHON SEWER DISTRICT
 HEALTH HAZARD AREA IMPROVEMENTS**

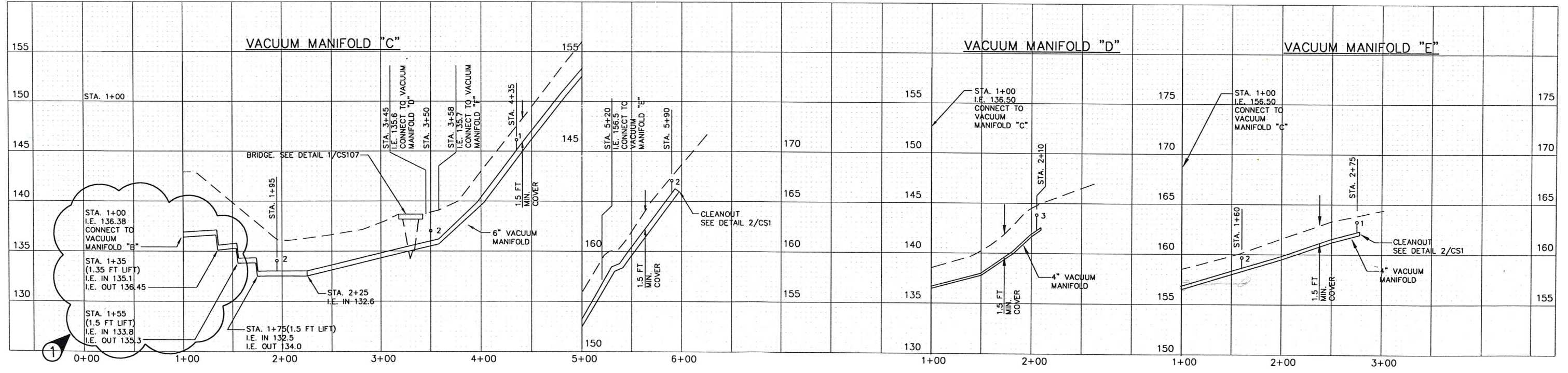
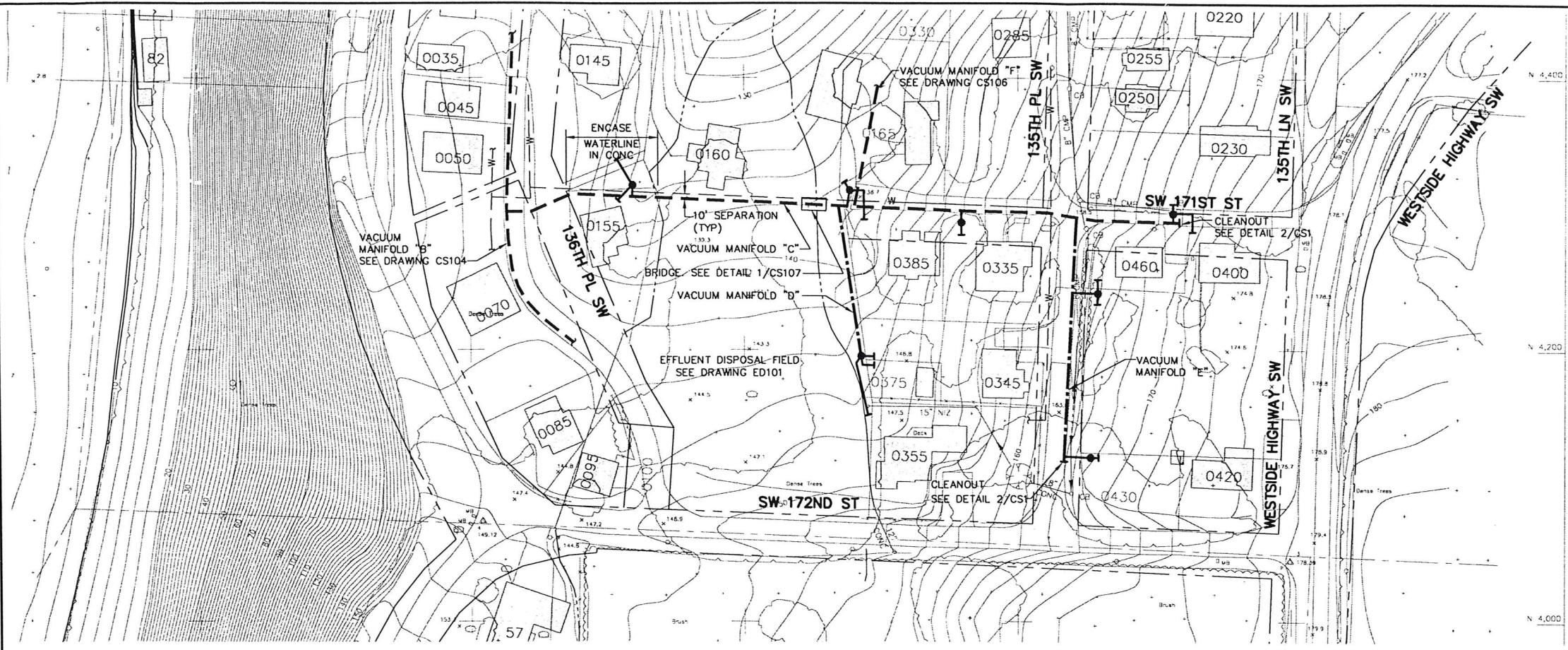
**SCHEDULE A
 BEULAH PARK AND COVE**

COLLECTION SYSTEM

**VACUUM MANIFOLD "B"
 PLAN AND PROFILE**

FILE INFORMATION:
 3/07/00
 V1-cs104.dwg
 Bobasi-1.dwg

ED34.PC2
 DRAWING NO.
CS104
 SHEET NO.
 OF



Project No: 28707.05.01		Designed: RD		Checked: JCW	
Date: 3/06/00		Drawn: CAD TEAM		Scale: HOR: 1"=50'	
No. 1		Description: ENGINEERING MODIFICATION 004		By: EAD	
Date		Date: MAY 1999		Appr:	
REVISION					

Project No: 28707.05.01	
Designed: RD	
Checked: JCW	
Scale: HOR: 1"=50'	
By: EAD	
Appr:	

EARTH TECH

10800 N.E. 8th St. 7th Floor
Bellevue, WA 98004
425 455-9494
425 453-9470 (FAX)

720 S. 333 St. Ste. 200
Federal Way, WA 98003
253 838-6202
253 874-0577 (FAX)

1200 Dupont St. Ste. 2-B
Bellingham, WA 98225
360 734-3202
360 734-0818 (FAX)

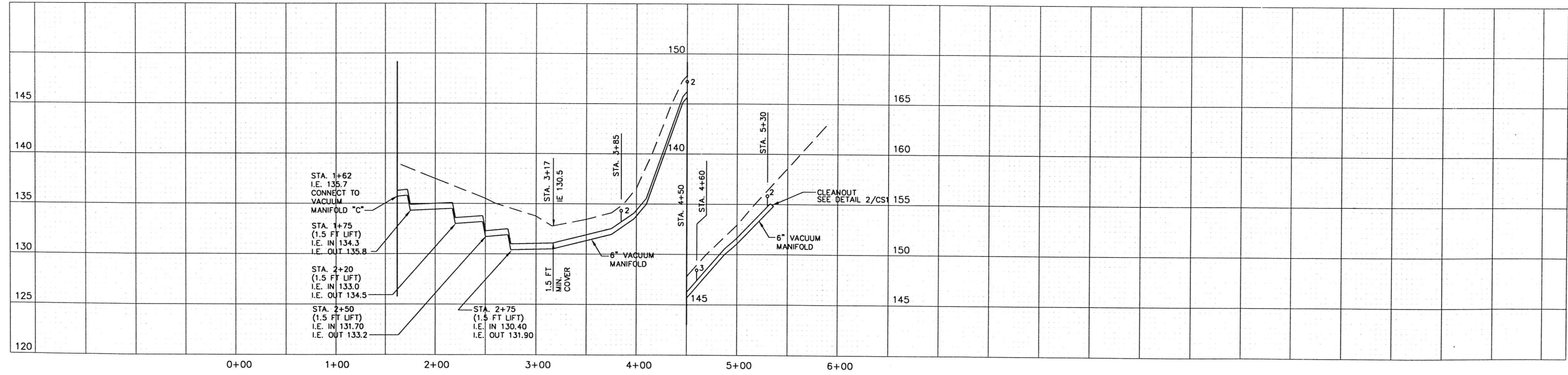
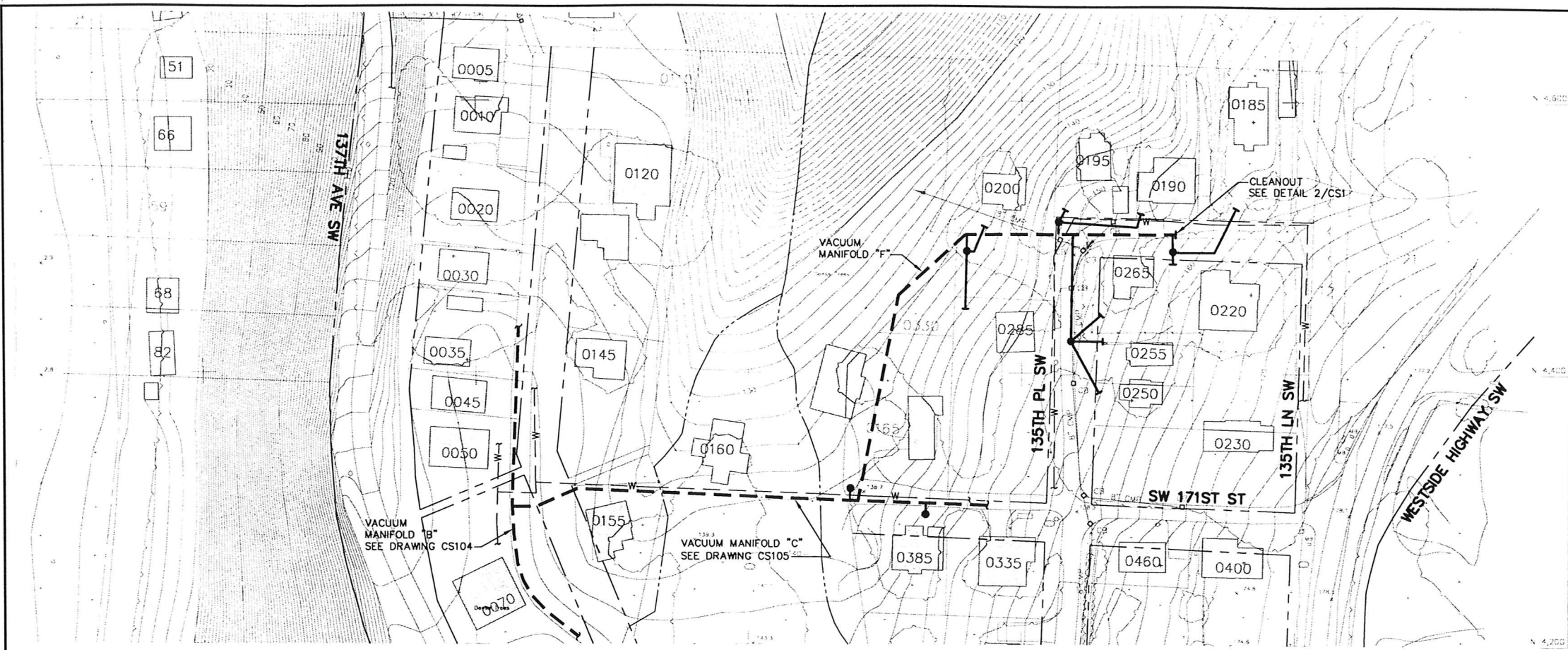
VASHON SEWER DISTRICT
HEALTH HAZARD AREA IMPROVEMENTS

SCHEDULE A
BEULAH PARK AND COVE

COLLECTION SYSTEM

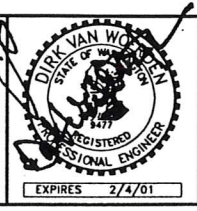
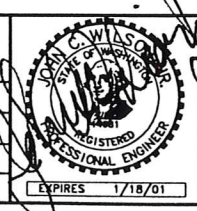
VACUUM MANIFOLD "C", "D" AND "E"
PLAN AND PROFILE

FILE INFORMATION:
3/07/00
W-cs105.dwg
Bobbie-1.dwg
ET34.PC2
DRAWING NO.
CS105
SHEET NO.
OF



Date	No.	Description	By
REVISION			

ONE INCH = 1" AT FULL SIZE
 IF NOT ONE INCH SCALE ACCORDINGLY
 Project No: 28707.05.01
 Designed: RD
 Drawn: CAD TEAM
 Date: MAY 1999
 Checked: JCW
 Scale: HOR: 1"=50'
 VERT: 1"=5'
 Apprd:



EARTH TECH

10800 N.E. 8th St. 7th Floor
 Bellevue, WA 98004
 425 453-9494
 425 453-9470 (FAX)

720 S. 333 St. Ste. 200
 Federal Way, WA 98003
 253 838-6202
 253 874-0577 (FAX)

1200 Dupont St. Ste. 2-B
 Bellingham, WA 98225
 360 734-3202
 360 734-0816 (FAX)

VASHON SEWER DISTRICT
HEALTH HAZARD AREA IMPROVEMENTS
SCHEDULE A
BEULAH PARK AND COVE

COLLECTION SYSTEM
VACUUM MANIFOLD "F"
PLAN AND PROFILE

FILE INFORMATION:
 4/21/99
 VI-ca106.dwg
 10666-1.dwg
 ER34.PC3
 DRAWING NO.
CS106
 SHEET NO.
 OF